

RESOLUTION NO. 814

A RESOLUTION DECLARING THE CITY OF PORTLAND'S INTENT TO ANNEX APPROXIMATELY 182 ACRES OF LAND INTO THE TERRITORIAL LIMITS OF THE CITY OF PORTLAND; SETTING DATES, TIMES, AND LOCATIONS FOR PUBLIC HEARINGS ON THE PROPOSED ANNEXATION (PHASE 3 SOUTH)

WHEREAS, state law requires the City to direct its staff to prepare a service plan that provides for the extension of municipal services to the area to be annexed; and

WHEREAS, Resolution No. 765 was adopted on April 16, 2019, that directed the City Manager to prepare a service plan for the extension of municipal services to the area to be annexed; and

WHEREAS, Resolution No. 766 was adopted on May 7, 2019, that adopted a service plan for the extension of municipal services to approximately 9,115 acres contiguous to the City of Portland; and

WHEREAS, state law provides that the City should conduct two public hearings at which persons interested in the annexation are given the opportunity to be heard;

NOW, THEREFORE, BE IT RESOLVED BY THE CITY COUNCIL OF THE CITY OF PORTLAND, TEXAS:

Section 1. The City Council declares its intent to begin the process of annexing the territory described below and as depicted in Exhibit "A" attached hereto and incorporated herein, consisting of approximately 182 acres of land lying adjacent to the City of Portland, Texas, into the territorial limits of Portland, Texas:

Beginning at a point in the southwest corner of Annexation Phase 2 (South), said point also being in the south ROW line of FM 893

Thence moving in a westerly direction staying on the south ROW line of FM 893 the following courses and distances

N 89d3'10.06" W 680.4'

N 89d20'48.28" W 996.6'

N 89d25'11.95" W 1671.0' to a point for corner in the south ROW line of FM 893 and the extension of the west ROW line of FM 893 meet, this is where FM 893 turns north

Thence, moving in a northerly direction remaining on the west ROW line of FM 893 N 0d48'4.45" E 2673.3' to a point in which appears to be an undeveloped ROW, said point is at the southwest corner of undeveloped ROW and FM 893

Thence, crossing over said undeveloped ROW N 10d11'0.94" W 44.9' to the northeast corner of said undeveloped ROW and FM 893

Thence, continuing in a northerly direction remaining on the west line of FM 893 N 1d3'26.44" E 2370.1' to a point for corner

Thence, moving in a northeasterly direction crossing over the FM 893 ROW N 52d0'4.56" E 82.7' to a point for corner, said point is 10' east of the east ROW line of FM 893 to a point for corner

Thence, moving in a northerly direction remaining 10' east of the east ROW line of FM 893 N 0d45'3.31" E 132.1' to a point for corner, said point is at the western corner of where Annexation Phase 3 (North) and Phase 3 (South) meet

Thence, in a easterly direction S 89d43'22.32" E 1000.0' to a point for corner, said point is the eastern corner of where Annexation Phase 3 (North) and Phase 3 (South) meet

Thence in a southerly direction S 0d40'16.25" W 4276.6' to a point for corner

Thence, moving in an easterly direction S 89d17'8.20" E 2271.8' to a point in the Northwest corner of Annexation Phase 2 (South)

Thence in a southerly direction S 0d46'59.67" W 1000.0' to the point of beginning and containing 181.80 acres of land.

Section 2. In accordance with Texas Local Government Code section 43.063, the City of Portland City Council will hold two public hearings, the first public hearing on Tuesday, January 5, 2021, at 6:30 p.m., and the second public hearing on Tuesday, January 5, 2021, at 7:00 p.m., both at the City of Portland City Hall located at 1900 Billy G. Webb, Portland, Texas; giving all interested persons the right to appear and be heard on the proposed annexation of certain property. In the event that City Hall is closed due to COVID-19 restrictions, the public hearings will be conducted via video conference. If more than 10 percent of the adults who are permanent residents of the area to be annexed file a written protest of the annexation with the City Secretary within 10 days of the publication of the notice, then the City Manager is authorized and directed to reschedule at least one of the hearings to a suitable site, if available, in the area proposed for annexation. The City Manager is hereby authorized and directed to cause notice of such public

hearing to be published once each in a newspaper having general circulation in the city and in the above described territory not more than twenty days nor less than ten days prior to the date of such public hearing, in accordance with the Municipal Annexation Act.

Section 3. The provisions of this resolution shall become effective immediately upon final passage and approved by the City Council.

PASSED and APPROVED this 3rd day of December, 2020.

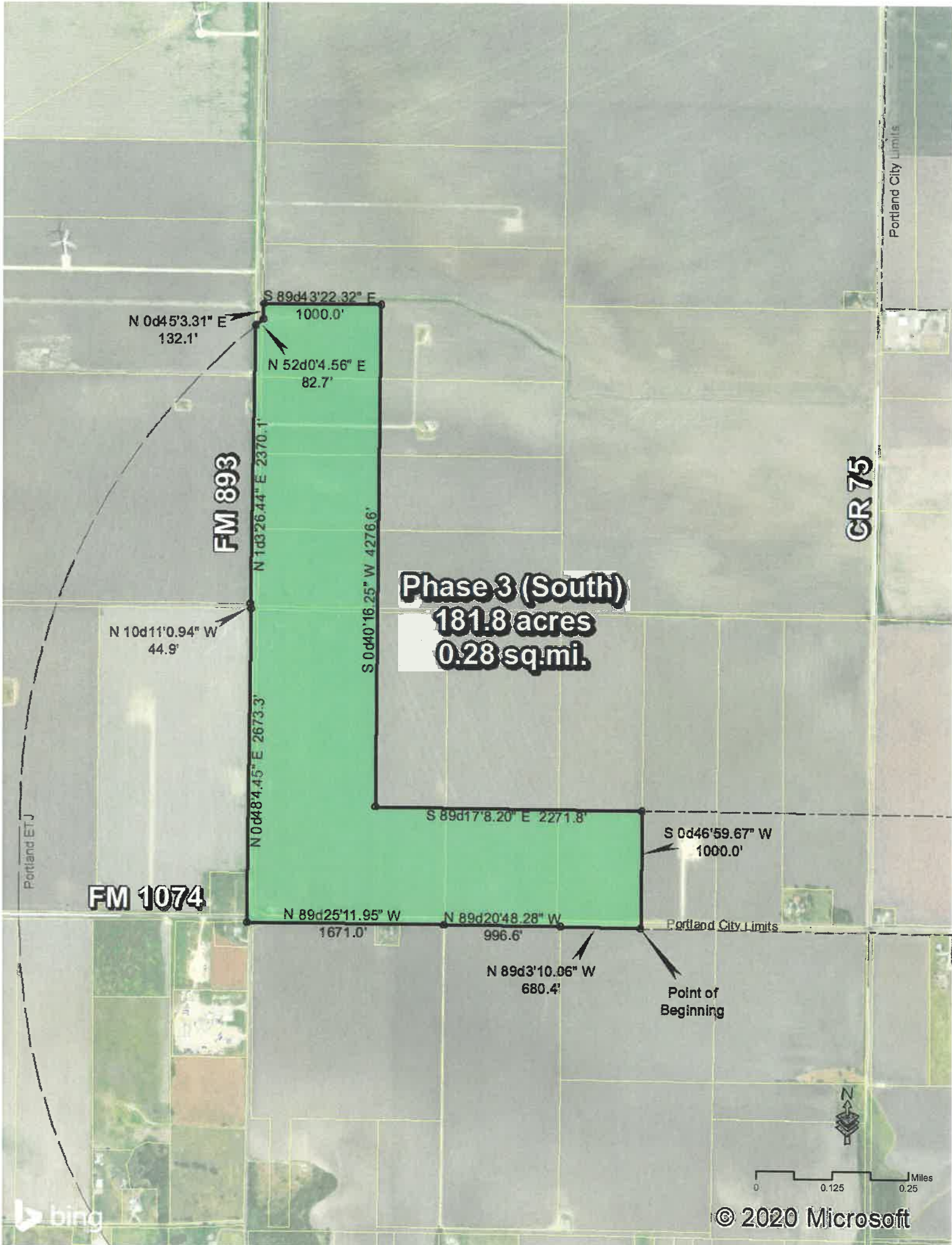
EXECUTED UPON APPROVAL

By: 
Cathy Skurow
Mayor

ATTEST:

By: 
Annette Hall
City Secretary







NOTICE OF FIRST PUBLIC HEARING

Phase 3 (South) Annexation

Notice is hereby given that a first public hearing will be held by the City Council of the City of Portland, Texas, at 6:30 p.m. on Tuesday, January 5, 2021, at the City of Portland City Hall City Council Chambers, 1900 Billy G. Webb, Portland, Texas, for all persons interested in the proposed annexation. All persons and interested parties shall have the right to appear and be heard at the public hearing. In the event that City Hall is closed due to COVID-19, the public hearing will be conducted via video conference. The public hearing agenda, which will be posted on or before Friday, January 1, 2021, at 6:30 p.m., at www.portlandtx.com and at City Hall, will contain the procedures for participating in the video conference. Public comments can be submitted prior to the public hearing by emailing Annette.hall@portlandtx.com.

This will be the first of two public hearings as required by Texas Local Government Code Section 43.063. The purpose of the public hearing is to consider the proposed annexation of the proposed annexation boundary as described below and depicted on Exhibit "A":

Beginning at a point in the southwest corner of Annexation Phase 2 (South), said point also being in the south ROW line of FM 893

Thence moving in a westerly direction staying on the south ROW line of FM 893 the following courses and distances

N 89d3'10.06" W 680.4'

N 89d20'48.28" W 996.6'

N 89d25'11.95" W 1671.0' to a point for corner in the south ROW line of FM 893 and the extension of the west ROW line of FM 893 meet, this is where FM 893 turns north

Thence, moving in a northerly direction remaining on the west ROW line of FM 893 N 0d48'4.45" E 2673.3' to a point in which appears to be an undeveloped ROW, said point is at the southwest corner of undeveloped ROW and FM 893

Thence, crossing over said undeveloped ROW N 10d11'0.94" W 44.9' to the northeast corner of said undeveloped ROW and FM 893

Thence, continuing in a northerly direction remaining on the west line of FM 893 N 1d3'26.44" E 2370.1' to a point for corner

Thence, moving in a northeasterly direction crossing over the FM 893 ROW N 52d0'4.56" E 82.7' to a point for corner, said point is 10' east of the east ROW line of FM 893 to a point for corner

Thence, moving in a northerly direction remaining 10' east of the east ROW line of FM 893 N 0d45'3.31" E 132.1' to a point for corner, said point is at the western corner of where Annexation Phase 3 (North) and Phase 3 (South) meet

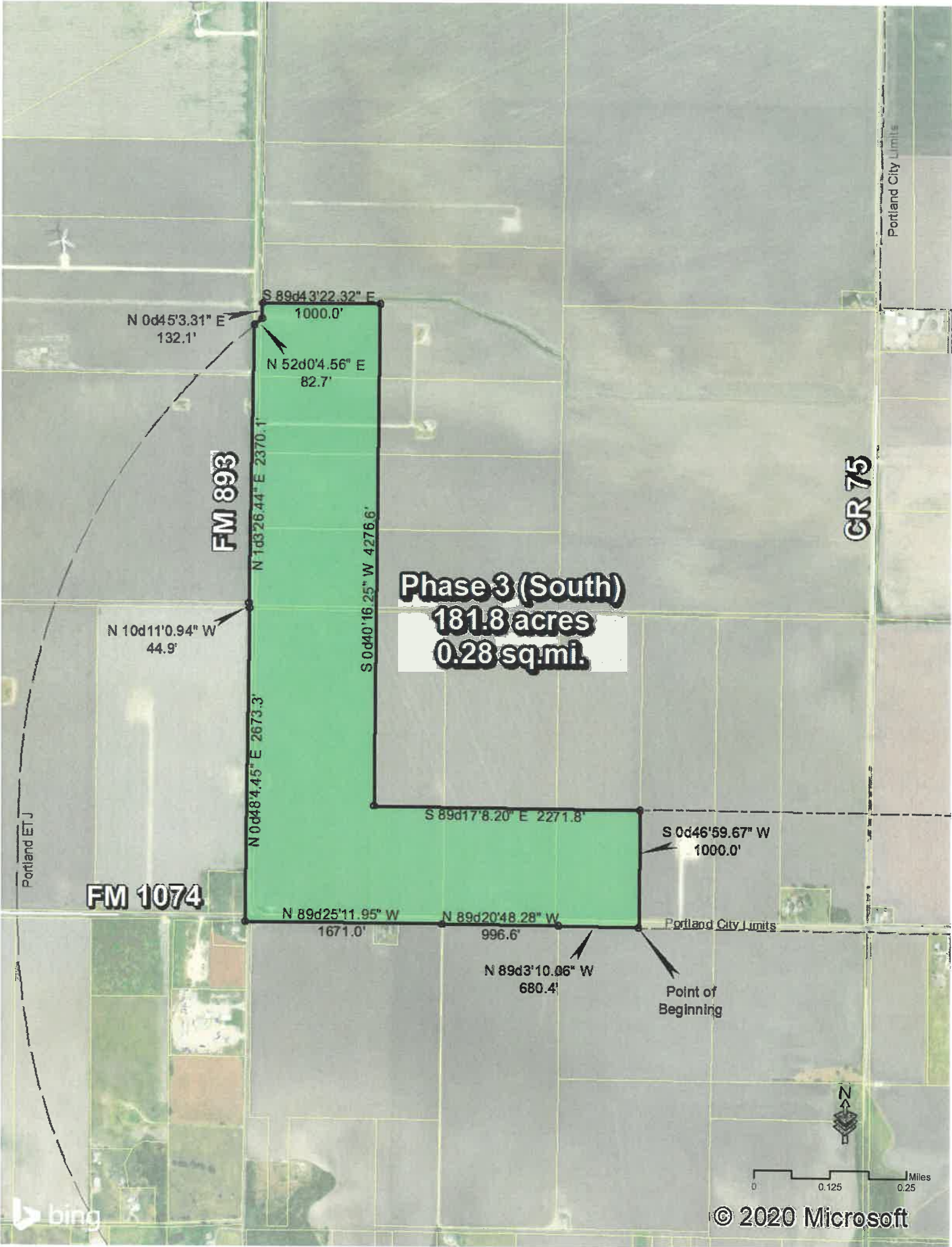
Thence, in a easterly direction S 89d43'22.32" E 1000.0' to a point for corner, said point is the eastern corner of where Annexation Phase 3 (North) and Phase 3 (South) meet

Thence in a southerly direction S 0d40'16.25" W 4276.6' to a point for corner

Thence, moving in an easterly direction S 89d17'8.20" E 2271.8' to a point in the Northwest corner of Annexation Phase 2 (South)

Thence in a southerly direction S 0d46'59.67" W 1000.0' to the point of beginning and containing 181.80 acres of land.

Any questions concerning this matter should be directed to Brian DeLatte, P.E., Deputy City Manager, at (361) 777-4516 or brian.delatte@portlandtx.com.



N 0d45'3.31" E
132.1'

S 89d43'22.32" E
1000.0'

N 52d0'4.56" E
82.7'

FM 893

N 1d3'26.44" E 2370.1'

S 0d40'16.25" W 4276.6'

**Phase 3 (South)
181.8 acres
0.28 sq.mi.**

N 10d11'0.94" W
44.9'

N 0d48'4.45" E 2673.3'

S 89d17'8.20" E 2271.8'

S 0d46'59.67" W
1000.0'

FM 1074

N 89d25'11.95" W
1671.0'

N 89d20'48.28" W
996.6'

N 89d3'10.06" W
680.4'

Point of Beginning

Portland City Limits

Portland City Limits

CR 75

Portland ETJ



0 0.125 0.25 Miles

© 2020 Microsoft





NOTICE OF SECOND PUBLIC HEARING

Phase 3 (South) Annexation

Notice is hereby given that a second public hearing will be held by the City Council of the City of Portland, Texas, at 7:00 p.m. on Tuesday, January 5, 2021, at the City of Portland City Hall City Council Chambers, 1900 Billy G. Webb, Portland, Texas, for all persons interested in the proposed annexation. All persons and interested parties shall have the right to appear and be heard at the public hearing. In the event that City Hall is closed due to COVID-19, the public hearing will be conducted via video conference. The public hearing agenda, which will be posted on or before Friday, January 1, 2021, at 6:30 p.m., at www.portlandtx.com and at City Hall, will contain the procedures for participating in the video conference. Public comments can be submitted prior to the public hearing by emailing Annette.hall@portlandtx.com.

This will be the second of two public hearings as required by Texas Local Government Code Section 43.063. The purpose of the public hearing is to consider the proposed annexation of the proposed annexation boundary as described below and depicted on Exhibit "A":

Beginning at a point in the southwest corner of Annexation Phase 2 (South), said point also being in the south ROW line of FM 893

Thence moving in a westerly direction staying on the south ROW line of FM 893 the following courses and distances

N 89d3'10.06" W 680.4'

N 89d20'48.28" W 996.6'

N 89d25'11.95" W 1671.0' to a point for corner in the south ROW line of FM 893 and the extension of the west ROW line of FM 893 meet, this is where FM 893 turns north

Thence, moving in a northerly direction remaining on the west ROW line of FM 893 N 0d48'4.45" E 2673.3' to a point in which appears to be an undeveloped ROW, said point is at the southwest corner of undeveloped ROW and FM 893

Thence, crossing over said undeveloped ROW N 10d11'0.94" W 44.9' to the northeast corner of said undeveloped ROW and FM 893

Thence, continuing in a northerly direction remaining on the west line of FM 893 N 1d3'26.44" E 2370.1' to a point for corner

Thence, moving in a northeasterly direction crossing over the FM 893 ROW N 52d0'4.56" E 82.7' to a point for corner, said point is 10' east of the east ROW line of FM 893 to a point for corner

Thence, moving in a northerly direction remaining 10' east of the east ROW line of FM 893 N 0d45'3.31" E 132.1' to a point for corner, said point is at the western corner of where Annexation Phase 3 (North) and Phase 3 (South) meet

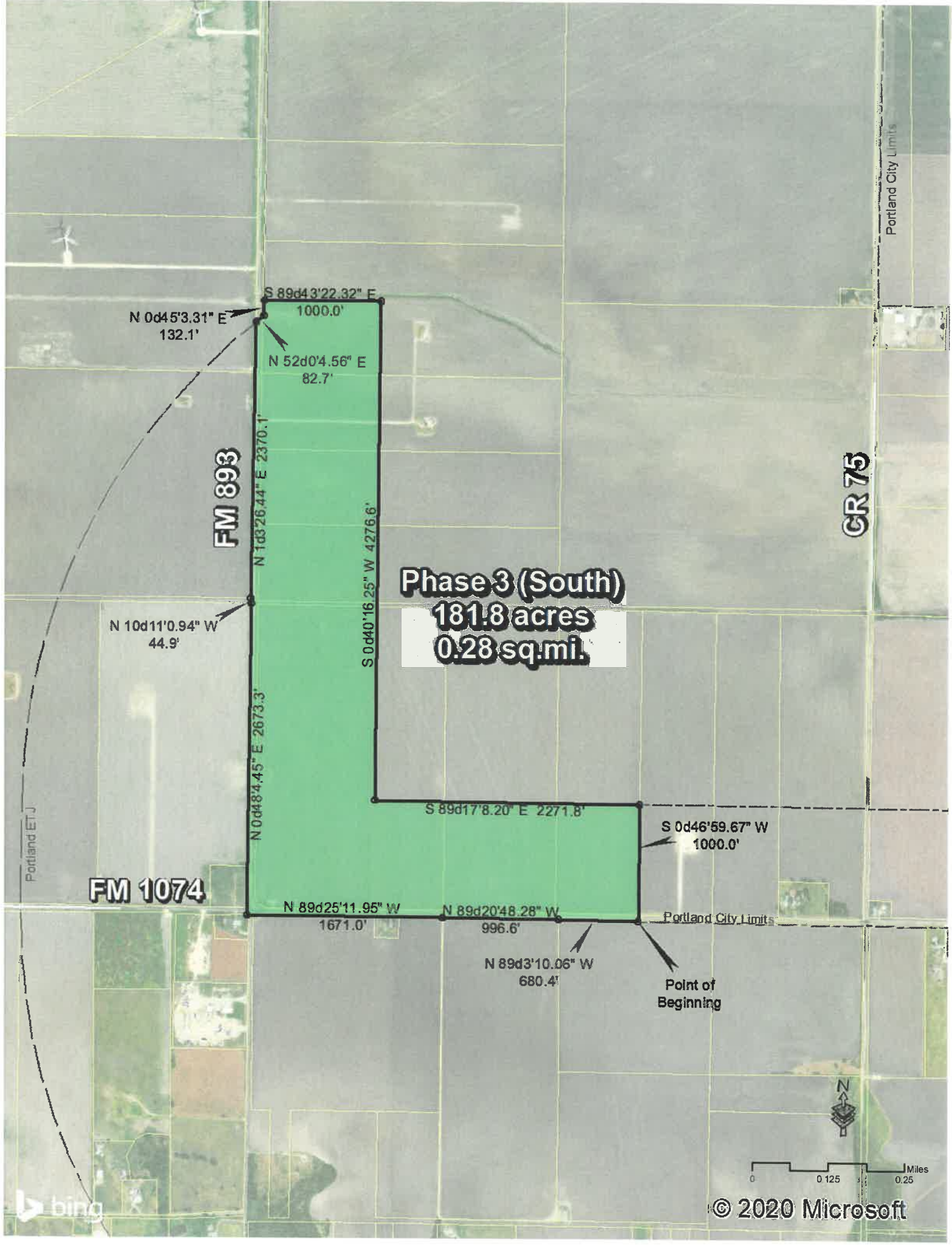
Thence, in a easterly direction S 89d43'22.32" E 1000.0' to a point for corner, said point is the eastern corner of where Annexation Phase 3 (North) and Phase 3 (South) meet

Thence in a southerly direction S 0d40'16.25" W 4276.6' to a point for corner

Thence, moving in an easterly direction S 89d17'8.20" E 2271.8' to a point in the Northwest corner of Annexation Phase 2 (South)

Thence in a southerly direction S 0d46'59.67" W 1000.0' to the point of beginning and containing 181.80 acres of land.

Any questions concerning this matter should be directed to Brian DeLatte, P.E., Deputy City Manager, at (361) 777-4516 or brian.delatte@portlandtx.com.



Phase 3 (South)
181.8 acres
0.28 sq.mi.

N 0d45'3.31" E
 132.1'

S 89d43'22.32" E
 1000.0'

N 52d0'4.56" E
 82.7'

FM 893

N 1d3'26.44" E 2370.1'

S 0d40'16.25" W 4276.6'

N 10d11'0.94" W
 44.9'

S 89d17'8.20" E 2271.8'

S 0d46'59.67" W
 1000.0'

FM 1074

N 89d25'11.95" W
 1671.0'

N 89d20'48.28" W
 996.6'

N 89d3'10.06" W
 680.4'

Portland City Limits

Point of Beginning

